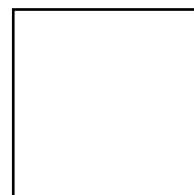


24" Square Molded Melamine Tabletop

without umbrella hole



Length: 24"
Width: 24"
Thickness: 0.67"
Unit Weight: 10.5 lbs

Product Specifications

Product Description	Reference Number	Color	UPC Code 014306	Pack Weight Each (lbs.)	Master Pack	Master Pack Volume (cu. ft)
24" Square Molded Melamine Tabletop without hole	UT210004	White	935799	14.00	1	0.54
	UT210025	Granite Green	935768	14.00	1	0.54
	UT210781	Tokyo Stone	935782	14.00	1	0.54
	UT210742	Aged Oak	935737	14.00	1	0.54
	UT210780	Barn White	935744	14.00	1	0.54
	UT211038	Granite	939247	14.00	1	0.54
	UT210815	Almeria	940083	14.00	1	0.54
	UT210816	Arizona	940182	14.00	1	0.54

Features & Benefits

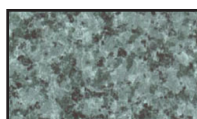
Warranty: 2 Yrs.

- Trendy marble, granite finish, or deco tops to complement all Grosfillex chairs.
- Hard, smooth molded tabletop made of a molded wood/resin body with a fusion bonded melamine top.
- Stain, burn, scratch, and fade resistant.
- Use Grosfillex's wide 4-prong central resin pedestal base 1000, tilt top aluminum base 100, or aluminum central pedestal base, or bar height table base with anti-skid glides for stability. Compatible with X-one base.
- Cleans easily with soap and water.
- Specifically designed and engineered for indoor/outdoor terraces, bars, breakfast areas, concessions, and balconies.
- Customize designs by mixing and matching tabletops and bases.
- Top and Base sold separately.

The shape of the table top may bend to a concave shape when exposed to direct sunlight. A deflection of as much as 3/16" per linear foot of table length can be expected. This is not a manufacturing defect as this deformation will not affect the structural integrity of the table nor its functionality.



White



Granite Green



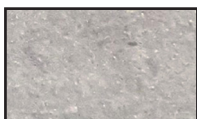
Tokyo Stone



Aged Oak



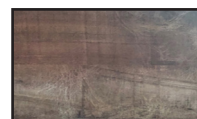
Barn White



Granite



Almeria



Arizona

