

24" x 32" Molded Melamine Tabletop

without umbrella hole



Length: 24"
Width: 32"
Thickness: 0.75"
Unit Weight: 15.25 lbs

Product Specifications

Product Description	Reference Number	Color	UPC Code 014306	Pack Weight Each (lbs.)	Master Pack	Master Pack Volume (cu. ft)
24" x 32" Molded Melamine Tabletop without hole	UT220004	White	935874	19.00	1	0.73
	UT220025	Granite Green	935843	19.00	1	0.73
	UT220781	Tokyo Stone	935867	19.00	1	0.73
	UT220742	Aged Oak	935812	19.00	1	0.73
	UT220780	Barn White	935829	19.00	1	0.73
	UT221038	Granite	939254	19.00	1	0.73
	UT220815	Almeria	940090	19.00	1	0.73
	UT220816	Arizona	940199	19.00	1	0.73

Features & Benefits

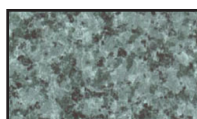
Warranty: 2 Yrs.

- Trendy marble, granite finish, or deco tops to complement all Grosfillex chairs.
- Hard, smooth molded tabletop made of a molded wood/resin body with a fusion bonded melamine top.
- Stain, burn, scratch, and fade resistant.
- Use Grosfillex's wide 4-prong central resin pedestal base 1000, tilt top aluminum base 100, or aluminum central pedestal base, or bar height table base with anti-skid glides for stability. Compatible with X-one base.
- Cleans easily with soap and water.
- Specifically designed and engineered for indoor/outdoor terraces, bars, breakfast areas, concessions, and balconies.
- Customize designs by mixing and matching tabletops and bases.
- Top and Base sold separately.

The shape of the table top may bend to a concave shape when exposed to direct sunlight. A deflection of as much as 3/16" per linear foot of table length can be expected. This is not a manufacturing defect as this deformation will not affect the structural integrity of the table nor its functionality.



White



Granite Green



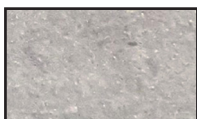
Tokyo Stone



Aged Oak



Barn White



Granite



Almeria



Arizona

